

Planetary Gearboxes PM Series

PM28

This is a group of planetary gearbox or planetary gearhead of PJ series, precision series.

Its diameter is $\varnothing 28$ mm. It has 5 stages, 5 length, and 125 models for your selection.

It is for DC, step or servo motor that the power is less than 5 W. The continuous output torque is 0.25-3.5 Nm.



Table 1: Features

Stages	Length (mm / in.)	Efficiency (%)	Weight (g / oz)
1	24.2 / 0.95	90	50 / 1.32
2	28.0 / 1.10	81	65 / 1.72
3	34.8 / 1.37	73	80 / 2.11
4	41.6 / 1.64	65	95 / 2.51
5	46.4 / 1.83	59	110 / 2.91

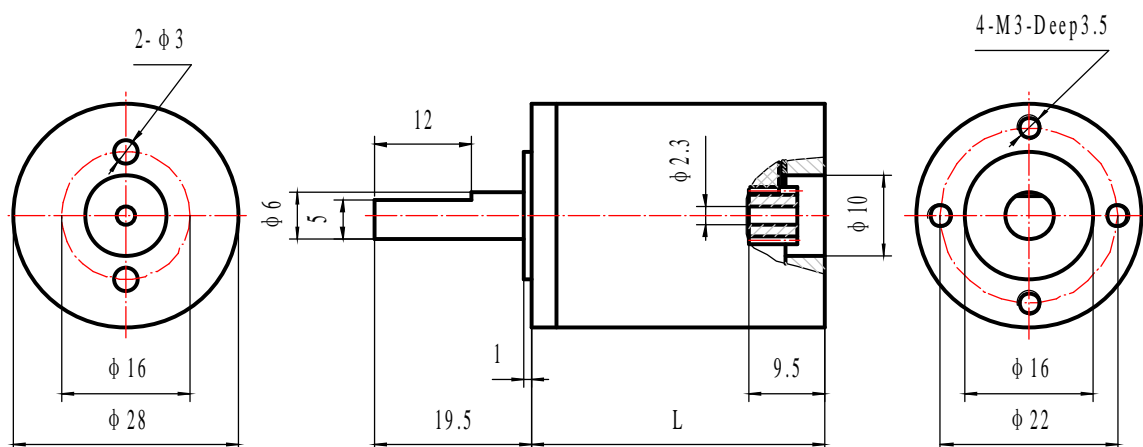


Table 2: Material and load

Items	Description
Shell Material	Carbon steel
Gear Materiel	First stage plastic, rest steel, hard gear surface
Output Shaft Materiel	Carbon steel
Flange Materiel	Aluminum
Bearing on Output End	Rolling bearing
Max. Input Speed	5,500 rpm
Max. Radial Load	10 N
Max. Axial Load	8 N
Max. Install Force	100 N
Radial Clearance	0.04 mm
Axial Clearance	0.03 mm
Operating Temperature	-10 to 85 , (14, to 185°F)

Table 3: Ratio and output torque

Model #	Ratio	Output Torque (Nm)		Stages
		Continuous	Intermittent	
1328001	3.57	0.25	0.4	1
1328002	4.00			
1328003	4.60			
1328004	5.50			
1328005	12.75	1	1.5	2
1328006	14.28			
1328007	16.00			
1328008	16.42			
1328009	18.40			
1328010	19.64	1	1.5	2
1328011	21.16			
1328012	22.00			
1328013	25.30			
1328014	30.25			
1328015	45.52	2	3	3
1328016	50.98			
1328017	57.12			
1328018	58.63			
1328019	64.00			

(Continued from Table 3: Ratio and output torque)

Model #	Ratio	Output Torque (Nm)		Stages
		Continuous	Intermittent	
1328020	65.69	2	3	3
1328021	70.10			
1328022	73.60			
1328023	75.54			
1328024	78.54			
1328025	84.64	2	3	3
1328026	88.00			
1328027	90.32			
1328028	97.34			
1328029	101.20			
1328030	107.99	2	3	3
1328031	116.38			
1328032	121.00			
1328033	139.15			
1328034	166.38			
1328035	162.50	3.5	4.3	4
1328036	182.00			
1328037	203.92			
1328038	209.30			
1328039	228.48			
1328040	234.51	3.5	4.3	4
1328041	250.25			
1328042	256.00			
1328043	262.75			
1328044	269.68			
1328045	280.39	3.5	4.3	4
1328046	294.40			
1328047	302.16			
1328048	314.16			
1328049	322.45			
1328050	338.56	3.5	4.3	4
1328051	347.49			
1328052	352.00			
1328053	361.28			
1328054	385.53			
1328055	389.34	3.5	4.3	4
1328056	404.80			
1328057	415.48			
1328058	431.97			
1328059	447.75			

(Continued from Table 3: Ratio and output torque)

Model #	Ratio	Output Torque (Nm)		Stages
		Continuous	Intermittent	
1328060	465.52	3.5	4.3	4
1328061	484.00			
1328062	496.77			
1328063	535.35			
1328064	556.60			
1328065	593.96	3.5	4.3	4
1328066	640.09			
1328067	665.50			
1328068	765.33			
1328069	915.06			
1328070	580.12	3.5	4.3	5
1328071	649.73			
1328072	727.99			
1328073	747.19			
1328074	815.67			
1328075	837.19	3.5	4.3	5
1328076	893.38			
1328077	913.92			
1328078	938.02			
1328079	962.77			
1328080	1000.98	3.5	4.3	5
1328081	1024.00			
1328082	1051.01			
1328083	1078.73			
1328084	1121.55			
1328085	1151.13	3.5	4.3	5
1328086	1177.60			
1328087	1208.66			
1328088	1240.54			
1328089	1256.64			
1328090	1289.78	3.5	4.3	5
1328091	1354.24			
1328092	1376.35			
1328093	1389.96			
1328094	1408.00			
1328095	1445.14	3.5	4.3	5
1328096	1483.25			
1328097	1542.13			
1328098	1557.38			
1328099	1598.45			

(Continued from Table 3: Ratio and output torque)

Model #	Ratio	Output Torque (Nm)		Stages
		Continuous	Intermittent	
1328100	1619.20	3.5	4.3	5
1328101	1661.91			
1328102	1727.88			
1328103	1773.45			
1328104	1790.98			
1328105	1862.08	3.5	4.3	5
1328106	1911.19			
1328107	1936.00			
1328108	1987.06			
1328109	2059.63			
1328110	2120.43	3.5	4.3	5
1328111	2141.39			
1328112	2226.40			
1328113	2285.12			
1328114	2375.84			
1328115	2462.60	3.5	4.3	5
1328116	2560.36			
1328117	2662.00			
1328118	2732.21			
1328119	2944.41			
1328120	3061.30	3.5	4.3	5
1328121	3266.77			
1328122	3520.50			
1328123	3660.25			
1328124	4209.29			
1328125	5032.84	3.5	4.3	5

For more information about our planetary gearboxes in PJ series, PH series and PM series, please visit our website www.broadwaygear.com. Thanks!