

Planetary Gearboxes PJ Series

PJ20

This is a group of planetary gearbox or planetary gearhead of PJ series, precision series.

Its diameter is $\varnothing 20$ mm. It has 5 stages, 5 lengths, and 20 models for your selection.

It is for DC, step or servo motor that the power is less than 10 W. The continuous output torque is 0.58-1.2 Nm.



Table 1: Features

Stages	Length (mm / in.)	Efficiency (%)	Backlash	Weight (g / oz)
1	20.3 / 0.80	90	1.2°	30 / 0.79
2	24.1 / 0.95	81	1.5°	35 / 0.93
3	27.8 / 1.09	73	1.8°	46 / 1.22
4	31.7 / 1.25	65	1.8°	55 / 1.45
5	35.5 / 1.40	59	1.8°	65 / 1.72

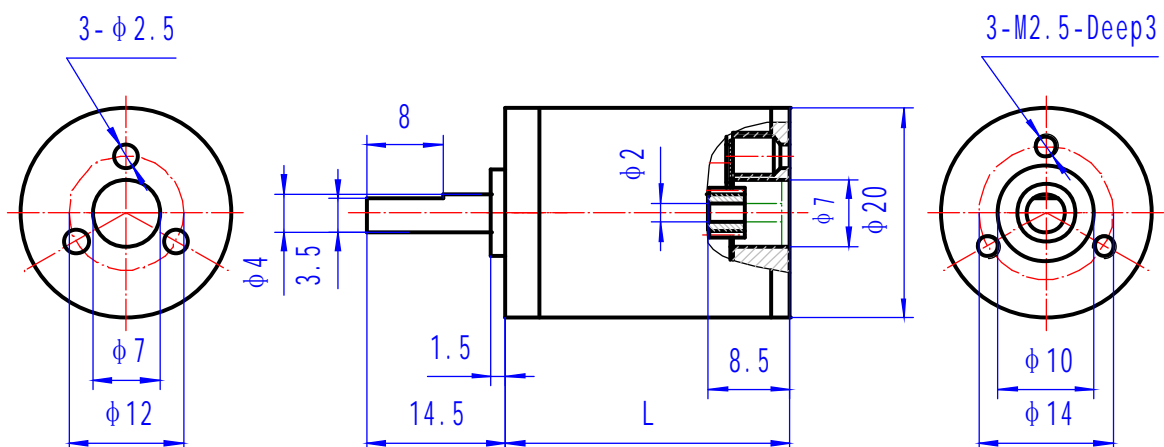


Table 2: Material and load

Items	Description
Shell Material	Stainless steel
Gear Materiel	Steel, hard gear surface
Output Shaft Materiel	Stainless steel
Flange Materiel	Stainless steel
Bearing on Output End	Rolling bearing
Max. Input Speed	6,000 rpm
Max. Radial Load	10 N
Max. Axial Load	10 N
Max. Install Force	100 N
Radial Clearance	0.01 mm
Axial Clearance	0.01 mm
Operating Temperature	-50 to 185 , (-58, to 365°F)

*-- Optional of plastic or steel gear for first stage

Table 3: Ratio and output torque

Model #	Ratio	Output Torque (Nm)		Stages
		Continuous	Intermittent	
1120001	3.57	0.58	0.92	1
1120003	4.6			
1120005	12.75	0.58	1.2	2
1120008	16.42			
1120011	21.16			
1120015	45.52	1.2	1.84	3
1120018	58.63			
1120023	75.54			
1120028	97.34			
1120035	162.5	1.2	1.84	4
1120038	209.3			
1120044	269.68			
1120051	347.49			
1120059	447.75			
1120070	580.12	1.2	1.84	5
1120073	747.19			
1120079	962.77			
1120088	1240.54	1.2	1.84	5
1120099	1598.45			
1120109	2059.63			

For more information about our planetary gearboxes in PJ series, PH series and PM series, please visit our website www.broadwaygear.com. Thanks!!