

Planetary Gearboxes PH Series

# PH22

This is a group of planetary gearboxes or gearhead of PH series, commercial series 2.

Its diameter is Ø22 mm. It has 5 stages, 5 length, and 20 models for your selection.

It is for DC, step or servo motor its power is less than 10W. The continuous output torque is 0.5-1.2 Nm.



Table 1: Features

Stages	Length (mm / in.)	Efficiency (%)	Backlash	Weight (g / oz)
1	20.3 / 0.80	90	1.2°	30 / 0.79
2	24.1 / 0.95	81	1.5°	35 / 0.93
3	27.8 / 1.09	73	1.8°	46 / 1.22
4	31.7 / 1.25	65	1.8°	55 / 1.45
5	35.5 / 1.40	59	1.8°	65 / 1.72

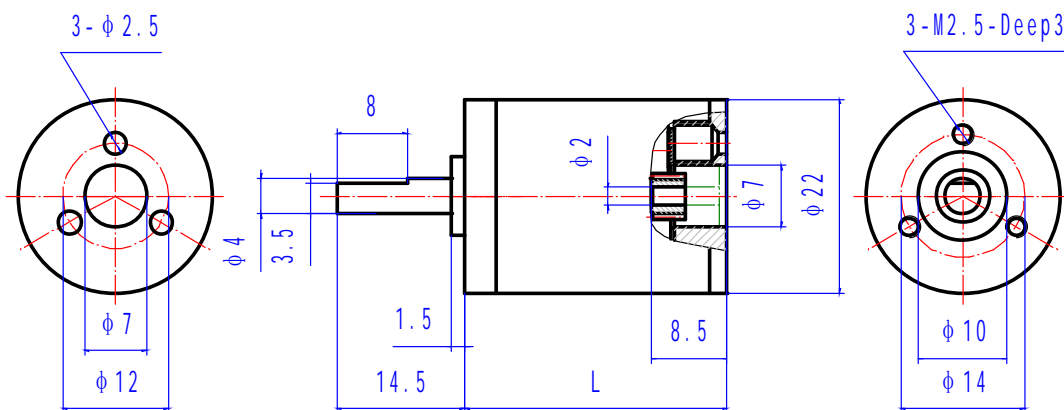


Table 2: Material and load

Items	Description
Shell Material	Stainless steel
Gear Materiel	Steel, hard gear surface*
Output Shaft Materiel	Stainless steel
Flange Materiel	Aluminum
Bearing on Output End	Rolling bearing
Max. Input Speed	6,000 rpm
Max. Radial Load	10 N
Max. Axial Load	10 N
Max. Install Force	100 N
Radial Clearance	0.04 mm
Axial Clearance	0.04 mm
Operating Temperature	-40 to 125 °C, (-40 to 257°F) -10 to 85 °C, (-14 to 185°F) for plastic gears

\*-- Optional of plastic or steel gear for first stage

Table 3: Ratio and output torque

Model #	Ratio	Output Torque (Nm)		Stages
		Continuous	Intermittent	
1224001	3.57	0.5	0.8	1
1224003	4.60			
1224005	12.76	0.8	1	2
1224008	16.43			
1224011	21.16			
1224015	45.55	1	1.8	3
1224018	58.67			
1224023	75.57			
1224028	97.34			
1224035	162.69	1.2	1.8	4
1224038	209.55			
1224044	269.90			
1224051	347.63			
1224059	447.75			
1224070	581.05	1.2	1.8	5
1224073	748.39			
1224079	963.92			
1224088	1241.53	1.2	1.8	5
1224099	1599.09			
1224109	2059.63			

For more information about our planetary gearboxes in PJ series, PH series and PM series, please visit our website [www.broadwaygear.com](http://www.broadwaygear.com). Thanks!